



**SCHWINN**  
RIDE AS ONE



## SCHWINN X BIKE

The X Bikes offer a tech-free experience ideal for music-focused group cycling studios as well as Multi-unit housing and hospitality fitness centers that do not offer guided classes. With optional 4iiii powermeter, members and guests can bring their phone or personal fitness device to track and store their personal data.



**SUSTAINABILITY**

### SAY NO TO STYROFOAM

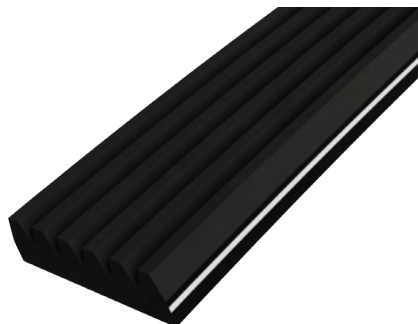
Creating positive impact through thoughtful action. In order to reduce our packaging's negative influence on marine life and waterways, we have replaced expanded polystyrene (EPS) with 100% recycled corrugate, which can be recycled again to also use less raw material. Look for ways to reduce your disposal fees and environmental impact with recycling!



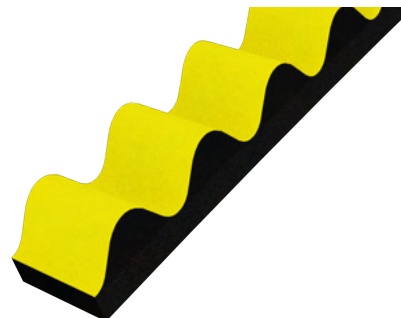
### CUSTOMIZATION

We know what it takes to build an authentic, meaningful brand experience. Our customization program is the perfect way to leverage all that hard work into creating an amazing group cycle experience. Whether your goal is creating a tranquil place to unwind or a high-energy disco ball clad club scene, our consultative approach will get you there.

[corehealthandfitness.com](http://corehealthandfitness.com)

**BELT FEEL**

**Xs 9-7480-QINTPO**

Smooth Poly V


**Xa 9-7470-QINTPO**

Authentic, toothed carbon belt

**OPENHUB™ CONNECTIVITY: BRING YOUR OWN CONSOLE**

Add\* a 4iiii powermeter to use personal fitness tracking apps to BYOC via BLE, or broadcast Power/RPM to an in-studio heads-up group display via ANT+

**WIRELESS COMMUNICATION:**

- Bluetooth
- ANT+


**DEVICES THAT CONNECT:**

- 4iiii Powermeter\* – BLE, ANT+


**TECHNOLOGY EXPERTS:**
**4iiii Powermeter**

- Personal cycling apps – BLE
- App-based group displays – BLE



\*The 4iiii Powercrank is available through upgrade, see page 3 for details under **Compatible Accessories and Upgrades**, for pricing speak with your Sales Rep.

## FEATURES

<b>PRODUCT WEIGHT</b>	130 lbs (59 kg)
<b>SHIPPING WEIGHT</b>	152 lbs (69 kg)
<b>PRODUCT FOOTPRINT (LXW)</b>	42.5 in x 20.6 in (1076.5 mm x 525 mm)
<b>MAX PRODUCT LENGTH</b>	56 in (1420 mm)
<b>SHIPPING DIMENSIONS (LXWXH)</b>	44.5 in x 10.6 in x 38 in (1130 mm x 270 mm x 960 mm)
<b>FRAME MATERIAL</b>	Aluminum
<b>FRAME FINISH</b>	Powder-coated
<b>FRAME COLOR</b>	Quantum Silver
<b>DRIVE SYSTEM/DRIVE TRAIN</b>	Smooth Poly V Xs 9-7480-QINTPO Authentic, toothed carbon belt Xa 9-7470-QINTPO
<b>RESISTANCE SYSTEM</b>	6 Magnet Non-Contact Magnetic Resistance
<b>Q-FACTOR</b>	168 mm
<b>HANDLE BAR</b>	Universal
<b>SADDLE</b>	AC Saddle
<b>FORE/AFT ADJUSTMENT SYSTEM</b>	Lever micro-adjustment
<b>HEIGHT ADJUSTMENT SYSTEM</b>	Pop-Pin
<b>FLYWHEEL</b>	Aluminum, thin profile
<b>PEDALS</b>	Morse Taper Double Link - SPD and athletic shoe cage
<b>USER HEIGHT RANGE</b>	4'11 to 6'8 (150 cm to 203 cm)
<b>MAX USER WEIGHT</b>	300 lb (136 kg)

## COMPATIBLE CONSOLES

<b>ZONE CONSOLE</b>	NA
<b>CADENCE PRO CONSOLE</b>	700-0543

## COMPATIBLE ACCESSORIES AND UPGRADES

<b>PEDALS</b>	Triple Link KEO-compatible, Morse Taper 718-5869 Triple Link Delta-compatible, Morse Taper 740-8689
<b>BIKE NUMBERING TAGS</b>	740-9639
<b>DUMBBELL HOLDERS</b>	700-0504-XX
<b>POWERMETER CRANK</b>	718-6306



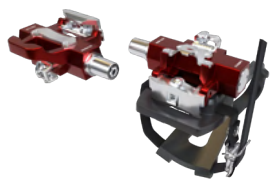


## CUSTOMIZATION OPTIONS

<b>FRAME COLORS</b>	Black Grey 83, Zinc Yellow 32, Wrinkle Black 26, Ultramarine Blue 73, Traffic Grey 57, Speckled Red 82, Silver 13, Quantum Silver 79, Purple 49, Powerhouse Granite 62, Peel White 61, Pearl Night Blue 80, Pastel Orange 77, Moss Green 56, Black 60, Karminrot 30, Eagle White 25, Candy Red 27, Candy Blue 65
<b>BRANDING (DECALS)</b>	Head tube, down tube, forks, seat tube, base tube, chain guard
<b>PEDALS</b>	Morse Taper Double Link, Morse Taper Schwinn Triple Link Delta-compatible, Morse Taper Schwinn Triple Link Keo-compatible
<b>SADDLES</b>	AC, SC, Road, Comfort
<b>LED LIGHTS</b>	N/A



Comfort Saddle



Morse Taper Triple Link™  
Keo-compatible pedals



Standard Morse Taper  
Double Link™ pedals



Morse Taper Triple Link™  
Delta-compatible pedals



Road Saddle

Core Health & Fitness is more than gym equipment, we offer innovative solutions for all your facility needs. This is why we've brought together five of the most recognizable fitness brands to ensure our customers can offer their members authentic fitness experiences. Whether working with us directly or through our partners and distributors worldwide, we provide the highest quality equipment backed by a service and support team that will always go the extra mile to get you what you need, when you need it. Partner with us and see how our Core Values motivate our every decision.

# CORE

## HEALTH & FITNESS

*StairMaster*

**SCHWINN**

**NAUTILUS**

**STAR TRAC**

**THROWDOWN**